

# BEWARE OF RIVER FLOOD!

  
-Where's it raining?

  
-How high is the river?

  
-Is it safe to go there now?

 <https://www.river.go.jp/e/>

KAWA-BO  
川防

River Flood  
Information

ENGLISH  
TRIAL ver.

 You can get the nation-wide information on rainfall and river water levels.

<https://www.river.go.jp/e/>



Water and Disaster Management Bureau,  
Ministry of Land, Infrastructure, Transport and Tourism  
2-1-3 Kasumigaseki, Chiyoda-ku, Tokyo 100-8918




CONTACT

[river\\_eng\\_support@river.or.jp](mailto:river_eng_support@river.or.jp)




## Hydrograph



Tap  to see the hydrograph. By swiping the graph to the left, the past hydrograph can be checked.

## CCTV Camera



Tap  to monitor the present image of the river. Compare it with the normal time image to understand how high the current water level is.



## River cross-section




Tap  to see the river cross-section and the real-time water level.



Tap to see the menu of this website.


## Base map

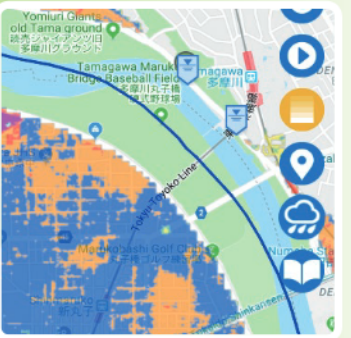
### XRAIN Mode

Tap  to see the current nationwide rainfall distribution over a scrollable map.

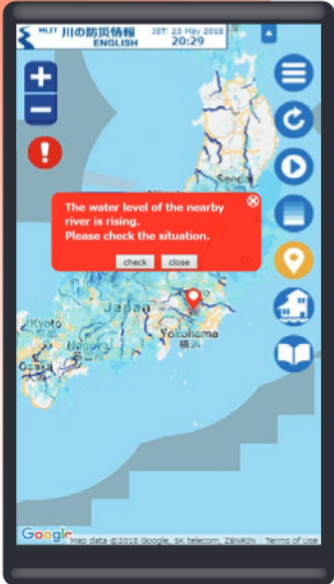


### Inundation map Mode

Tap  to see the inundation area and it's depth in case the nearby river is flooded.



## Alarm information



When a nearby river is likely to flood, alarm information pops up on the screen.

scan here to visit



<https://www.river.go.jp/e/>